



Intelligent and High Integrated Instrument with SmartView Design

Ascentac OTDR700 Series, Optical Time Domain Reflectometer, is an advanced instrument for troubleshooting, measuring and recording status of fiber-optic networks. The high resolution and narrow event dead-zone enable fiber-optic status in installation, operation and maintenance to be analyzed comprehensively and precisely. The feature of built-in power meter, light source, loss meter and VFL (optional) makes it a truly multipurpose and ideal instrument for fiber-optic-related measurement.

Ascentac OTDR700 Series utilizes one-touch automatic measurement which can avoid test setup errors and smart view in the linear way which simplifies results interpretation. The distance of each event, total loss, total return loss and Pass/Fail result will be directly indicated. These test results can also be stored and converted to PC for copy and saving as the record for future reference.

Ascentac OTDR700 Series offers on-site technicians the most outstanding performance and incredible experience.

Benefits

- 5 fiber-optic test functions in one unit (OTDR, Power meter, Light source, Loss meter, VFL)
- Event dead zone less than 1.5m & Attenuation dead zone less than 4.5m
- Up to 256000 sampling points
- Multiple-wavelength for single-mode
- One-button operation
- Automatic Pass/Fail analysis

Application

- Construction, deployment and maintenance of FTTH
- CATV network testing
- Metro network testing

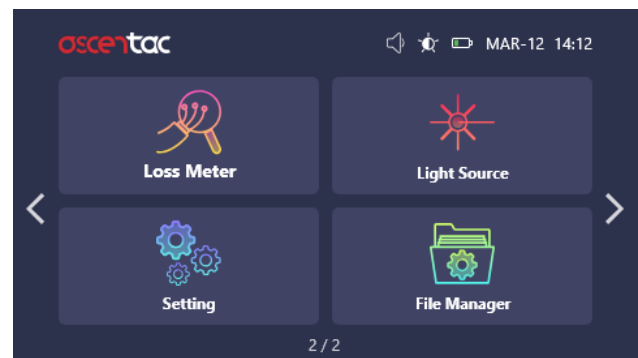
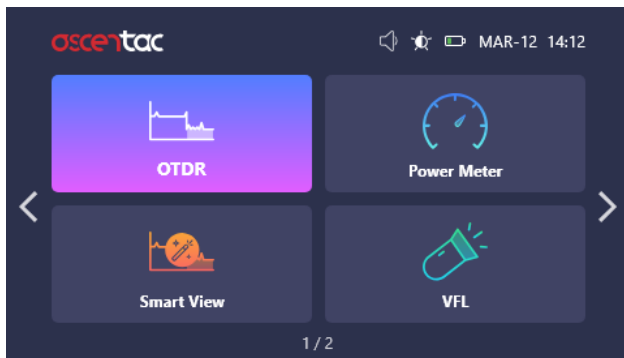
Description

- ① Portable & lightweight
- ② Power status indicator
- ③ Laser-on indicator
- ④ One-touch automatic measurement
Intuitive interface for easy use
- ⑤ Shatter-resistant sleeve & IPx3 (Protected against spraying water)
- ⑥ Outdoor-enhanced 4.3 inch TFT color touch LCD with backlight function
(Comfortable to read display for any abominable environments)



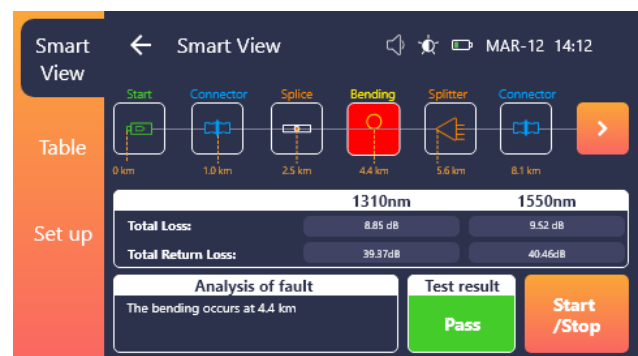
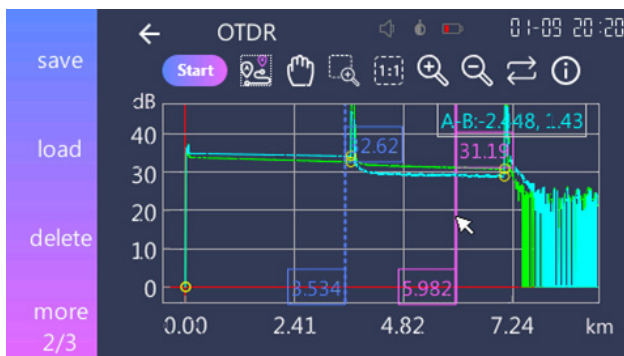
Multifunction

The OTDR 700 Series is a highly integrated instrument. It combines all essential fiber testers (OTDR, Power meter, Light source, Loss meter, VFL) in one set. The minimum investment makes the maximum value.



SmartView Design

The OTDR 700 Series not only has the traditional OTDR trace but also makes measured results displayed in icons. Technicians can assess the status of the fiber-optic cable in the easiest and quickest way.



What is an OTDR?

OTDR, short for optical time domain reflectometer, is designed for testing the performance of newly installed fiber-optic links and detecting problems that may exist.

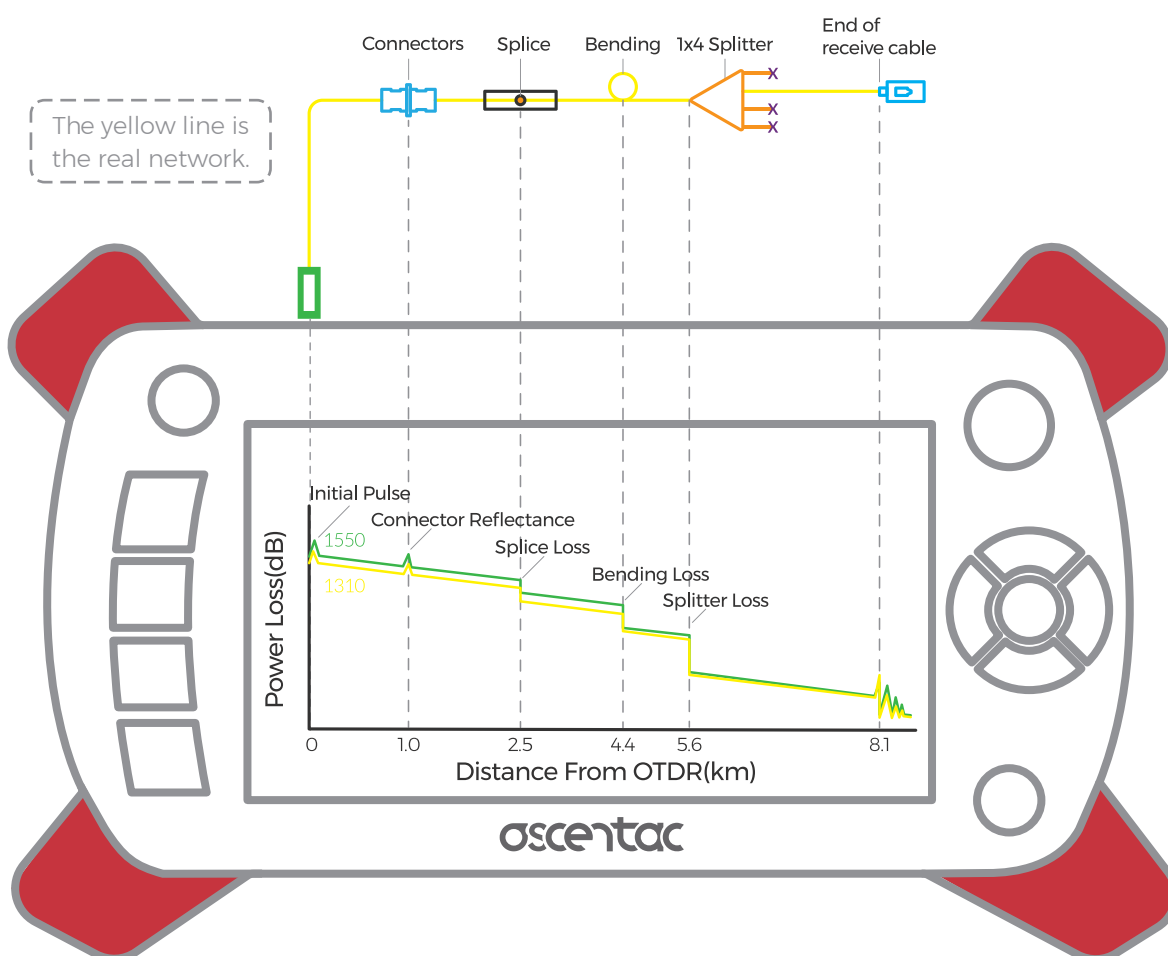
It can calculate the fiber length & attenuation and locate faults. It is an excellent instrument for troubleshooting and fault locating.

How does an OTDR work?

OTDR will send an optical pulse down the fiber and produce a “trace” (a graph of optical power in dB versus the length of the fiber) based on the return signal to present the measurement of the fiber.

The trace can be stored for reference. Comparisons can be made between the original trace and later trace if problems arise.

OTDR Trace Based on the Real Network



Specification

OTDR Specification

Wavelength (nm)	1310 ± 20	1550 ± 20	1625 ± 5	1310 ± 20 & 1550 ± 20	1310 ± 20 & 1625 ± 5	1550 ± 20 & 1625 ± 5
Dynamic Range (dB)	33	31	31	30/28	30/28	28/28
Pulse Width (ns)	5 to 20000					
Event Dead Zone (m)	< 1.5					
Attenuation Dead Zone (m)	< 4.5					
Testing Distance (km)	0.1 to 260					
Sampling Points (Points)	256000					
Distance Accuracy (m)	± (1 + 0.003 % x distance + sampling resolution)					
Optical Connector	SC/PC					

OPM Specification

Power Range (dBm)	+6 to -65
Accuracy (dB)	± 0.3
Resolution (dB)	0.01
Wavelength Range (nm)	1310, 1490, 1550, 1625
Optical Connector	SC/PC

OLS Specification

Central Wavelength (nm)	1310±20 1550±20 1625±5	1310±20 & 1550±20 1310±20 & 1625±5 1550±20 & 1625±5
Output Power (dBm)	-4	-7
Stability (dB)	± 0.5	
Optical Connector	SC/PC	

VFL Specification

Wavelength (nm)	650±10 (Visible)
Output Power (mW)	1
Modulation Output	CW(Continuous Wavelength), 1Hz, 2Hz
Optical Connector	Universal 2.5mm

Display

4.3 inch ultra-bright TFT color touch LCD with backlight function

Power Supply

DC Input Voltage (V/Amp)	5.0 / 4.0
Battery Life (hours)(with backlight)	> 6

Environment

Working Temperature (°C)	0 to +50
Storage Temperature (°C)	-20 to +60
Relative Humidity (%)	5 to 95, Non-condensing

Dimensions and Weight

Size (H x W x D) (mm)	124 x 225 x 70.5
Weight (g) (batteries included)	850

Others

Interface	1. Type-A USB 2. Mini USB 3. 10/100Mbps Ethernet RJ-45
Ingress Protection	IPx3

Standard Accessories

Main unit, Resistive touch pen, Adaptor cleaning sticks (2.5mm) 10pcs, Fiber cleaner, Carrying case, Shoulder strap, Lithium battery, Power adapter, Power cord, One-year warranty

Ordering Information

OTDR 01-007 **XX**

OTDR Wavelength & Dynamic Range

01 : 1310nm, 33dB

02 : 1550nm, 31dB

03 : 1625nm, 31dB

21 : 1310/1550nm, 30/28dBm

22 : 1310/1625nm, 30/28dBm

23 : 1550/1625nm, 28/28dBm

Note : 1. OTDR with built-in SC/PC adaptor.

2. Incl. Optical Light Source (OLS), wavelength & optical interface same with OTDR.

3. Incl. Visual Fault Locator (VFL) with output power 1mW and built-in universal 2.5mm tip sleeve.

4. Incl. Optical Power Meter (OPM) with power range from +6dBm to -65dBm and built-in SC/PC adaptor.

Option

Battery

A0-00501	4.2V 10000mAh Lithium
----------	-----------------------

Adaptor & Power Cord

A0-00221	AC Adaptor
A0-00222	Power Cord with US Plug
A0-00223	Power Cord with EU Plug
A0-00224	Power Cord with UK Plug
A0-00225	Power Cord with AU Plug

Fiber Optic Cable

A0-00601	Single Mode 9/125--SC/UPC to SC/UPC--2m
A0-00602	Single Mode 9/125--SC/UPC to LC/UPC--2m
A0-00603	Single Mode 9/125--SC/UPC to ST/UPC--2m
A0-00604	Single Mode 9/125--SC/APC to SC/UPC--2m
A0-00605	Single Mode 9/125--SC/APC to LC/UPC--2m
A0-00606	Single Mode 9/125--SC/APC to SC/APC--2m
A0-00607	Single Mode 9/125--FC/UPC to FC/UPC--2m

Adapter Cleaning Sticks - 100 pcs/box

02-0A110	1.25mm without ESD (Electro-Static Discharge)
02-0A120	2.5mm without ESD (Electro-Static Discharge)
02-0B110	1.25mm with ESD (Electro-Static Discharge)
02-0B120	2.5mm with ESD (Electro-Static Discharge)

Fiber Cleaner - 400 wipes/pc

02-00411	Reusable Fiber Cleaner--1 slot
02-00412	Reusable Fiber Cleaner--2 slots
02-00421	Cartridge--1 slot
02-00422	Cartridge--2 slots

Example : OTDR 01-00701

Option: A0-00501, A0-00221, A0-00222, A0-00601

